



10911 BEAUTY
2-16-25

WINDOW MANUF:
TBD
Black with grids
patterns as shown on
architectural
drawings



SW 7020

Black Fox

EXTERIOR PAINT COLOR
Fascia, soffit & siding
SW Black Fox



FRONT DOOR STAIN SW
SW 3542 Charwood
Exterior Semi-Transparent
Stain

STUCCO COLOR

STONE CLADDING
TBD

GUTTER SELECTIONS
*Half Round gutters
with round downspouts*
COLOR DARK BRONZE



Dark
Bronze



ROOF DETAILS
*Metal Roof - DARK BRONZE
Shingles - Certainteed Belmont
Level 4 COLOR TBD*



Dark
Bronze



FRONT DOOR
Stained 4 lite, raised panel door with clear glass Sidelites with raised panel detail



FRONT DOOR HANDLESET
Black

01234
56789

HOUSE NUMBERS
5" black



DOORBELL
Black



FRONT PORCH & LEAD WALK
Broom Finish concrete



FRONT DOOR STAIN SW
SW 3542 Charwood Exterior Semi-Transparent Stain

FRONT PORCH CEILING COLOR

FRONT PORCH CEILING MATERIAL
Exterior Sheetrock

GARAGE DOOR
Stained Cedar



Design 2

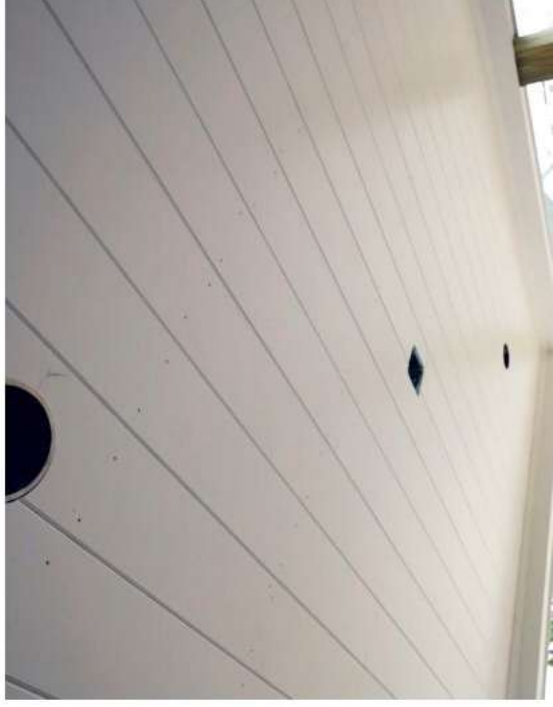
STAIN SW 3542 Charwood
Exterior Semi-Transparent Stain



EXTERIOR LIGHTING
2 Black 31"



**PAINTED TONGUE & GROOVE
CEILING**



**PAINTED SMOOTH HARDIE SHIPLAP
CEILING**



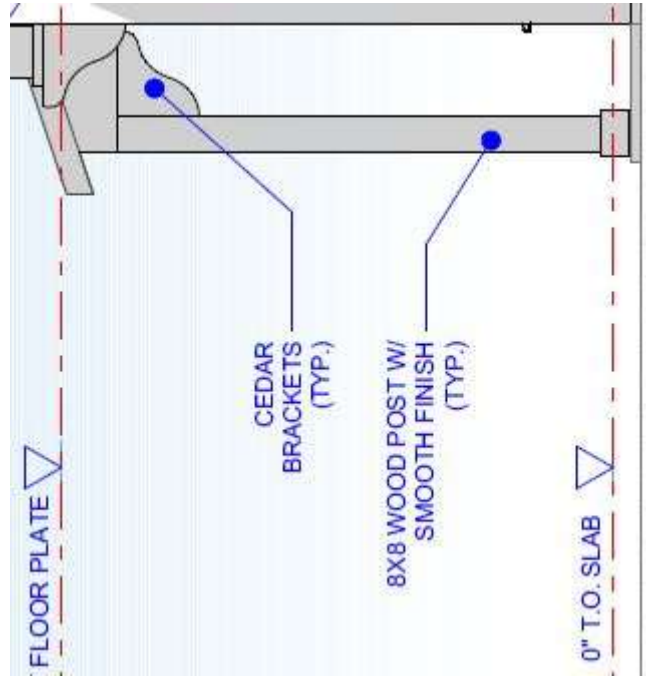
**PAINTED BEADBOARD CEILING with
2" trim**



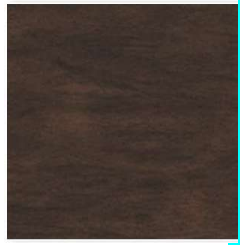
**PAINTED SMOOTH HARDIE
CEILING with 4" trim**



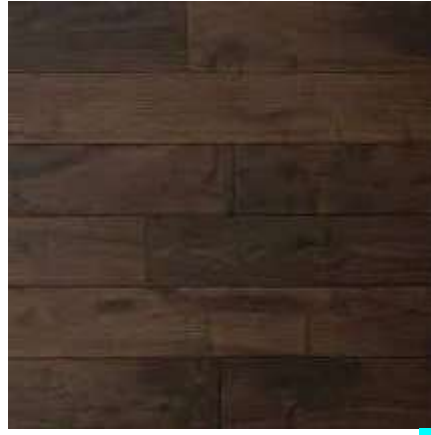
2 60" CEILING FANS



POSTS & BRACKETS
Smooth Cedar
Stained to match



STAIN SW 3542 Charwood
Exterior Semi-Transparent
Stain



REAR PATIO CEILING
Stained Tongue & Groove

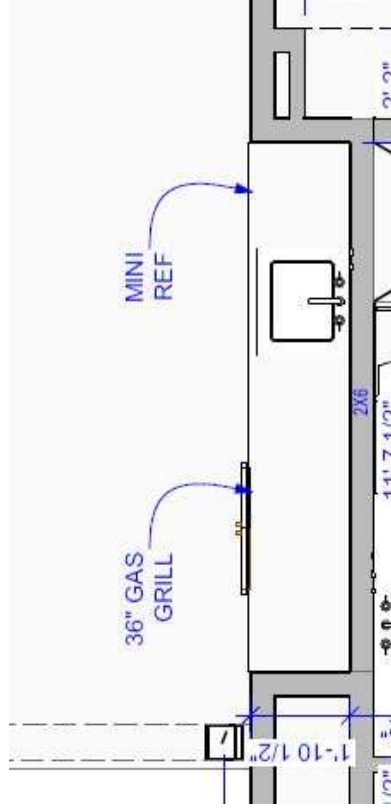


4 FLOOD LIGHTS
Motion 240



COUNTERTOP
2cm Honed Black Granite

GRILL SURROUND
Match stucco



GRILL
36" Coyote Grill
MODEL TO BE CONFIRMED PRIOR TO CONSTRUCTION



ACCESS PANEL
36" Coyote
MODEL TO BE CONFIRMED PRIOR TO CONSTRUCTION

Mini fridge? appliances?



REAR PATIO FINISH:
Broom Finish



FENCE DETAILS
VERTICAL BOARD ON
BOARD

STAIN : *Wood Defender,*
COLOR COFFEE BROWN



DRIVEWAY CONCRETE FINISH
Broom Finish



LEAD WALK
Broom finish



FRONT PORCH
Broom finish



REAR PATIO FINISH
Broom finish



CURVED DEEP BOARD & BATTEN OPENING

Locations: Foyer to Great Room



SLIM WHITE OAK CASED OPENINGS

*Locations: Great room to kitchen, kitchen to dining room
 **By Cabinet Maker to match kitchen white oak and trim sizes*

SW 7004
Snowbound

TYPICAL WALL COLOR
SW Snowbound

TYPICAL PAINT COLORS

WALLS *SW Snowbound*

TRIM *SW Snowbound*

DOORS & DOOR FRAMES *SW Snowbound*

SW 7004
Snowbound

TYPICAL TRIM COLOR
SW Snowbound



KEYED ENTRY /
DEADBOLT DOOR
HARDWARE
Black



TYPICAL DOOR
HARDWARE
Black

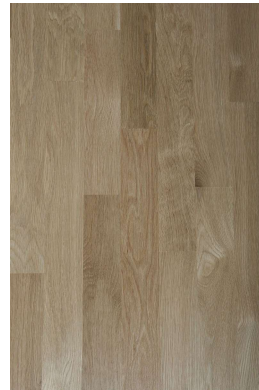


POCKET DOOR
HARDWARE
Black

*NOTE TO TAYLOR OR
MEKDES - we need pocket
door hardware for french
doors in the study*



DOOR HINGES
Black



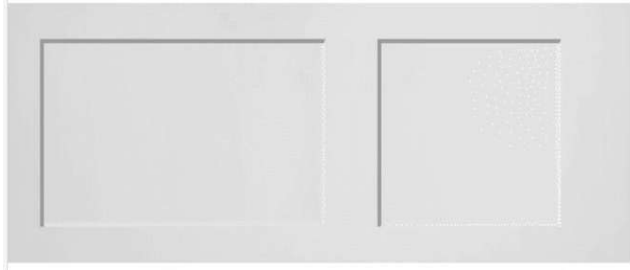
WHITE OAK HARDWOOD FLOORS
SIZE 3-1/4"
NO HANDSCRAPE
SAMPLE COLORS: *Minwax Natural*(full
strength), *Minwax Natural + Fallen*
Cypress (1:1), *Bona Classic Seal*,



DOOR & WINDOW CASING STYLE
4" with edge detail



CASED WINDOW STYLE
4" Flat casing with raised edge detail,
Sill ear to extend into casing, but not beyond



TYPICAL INTERIOR DOOR STYLE:
2 Panel Shaker



CROWN Cove
(only in rooms noted on design boards)



BASEBOARD
Style : Savannah 7.5"
no quarter round at floor

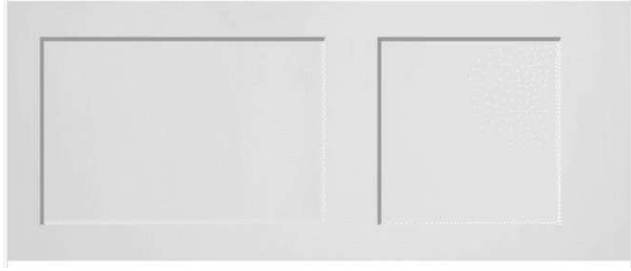
Savannah/Base
3/4" x 5 3/4"
Primered MDF
3/4" x 7 1/2"
Primered MDF

TRIM DETAILS

- GREAT ROOM - Clear pine + collar tie
- KITCHEN - Clear pine beams
- KITCHEN NOOK - Paint grade beams and half round picture moulding as crown
- DINING - Clear pine Tongue & Groove with Beams
- STUDY - Paint grade beams with cove
- PRIMARY BEDROOM - Paint grade beams with tongue & groove
- PRIMARY BATHROOM (over tub area) - Clear pine Beams with tongue and groove
- POWDER BATHROOM 2 - Clear pine Beams with tongue and groove

INTERIOR DOOR DETAILS

**TYPICAL INTERIOR DOORS - Two paneled shaker*

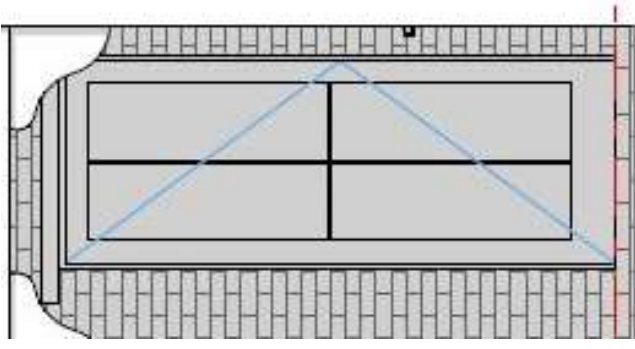


TYPICAL INTERIOR DOOR STYLE:

2 Panel Shaker

EXTERIOR DOOR DETAILS

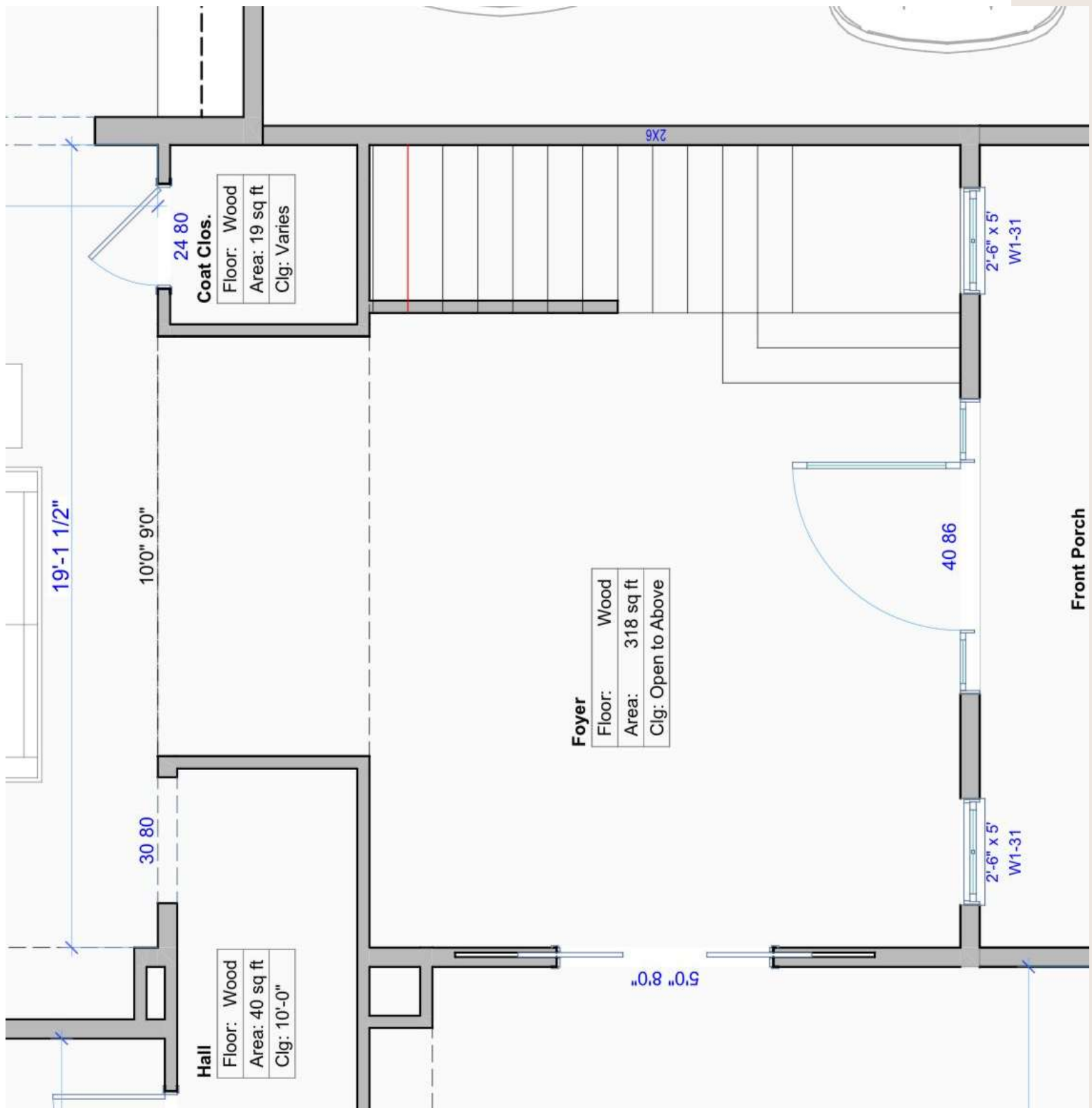
**PATIO EXTERIOR DOOR - 4 Lite*

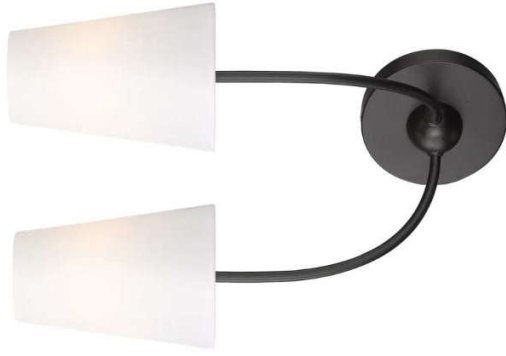


SECONDARY EXTERIOR DOORS

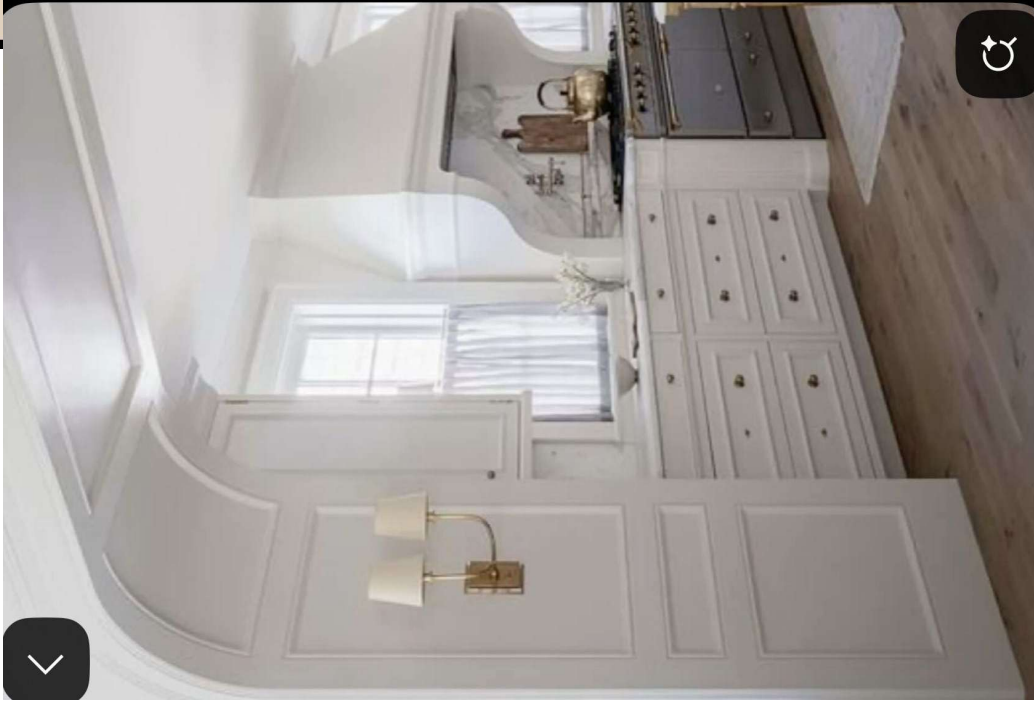
4 LITE

Paint to match exterior trim

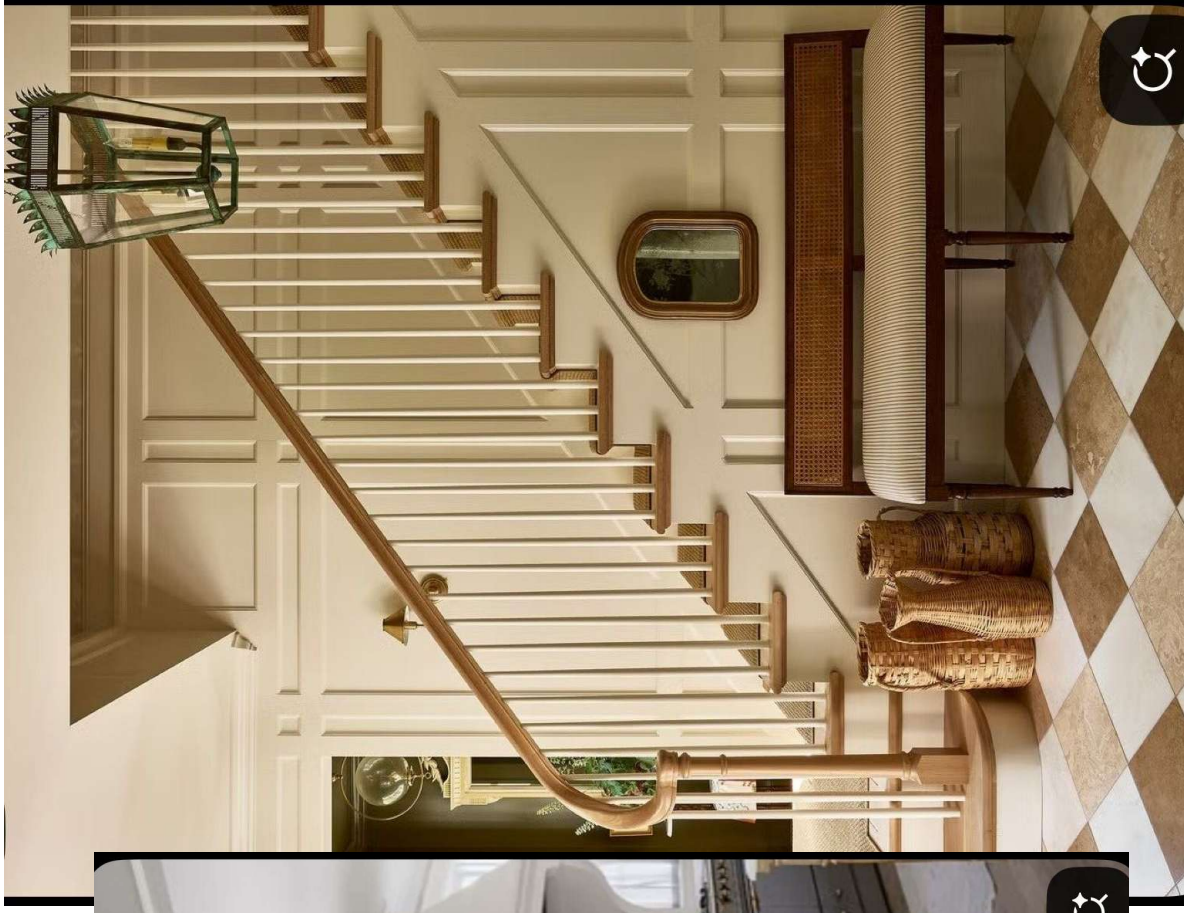




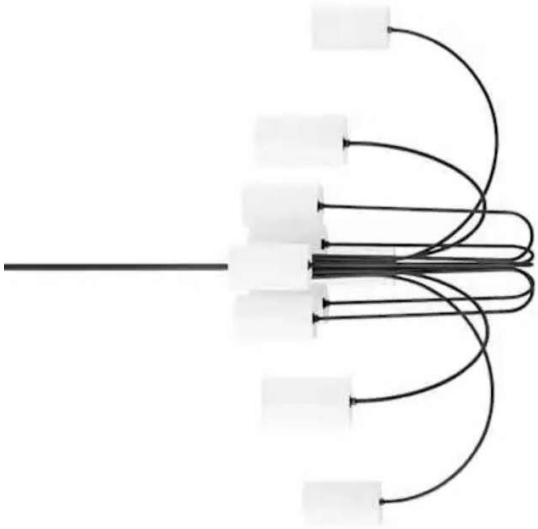
2 DOUBLE SCONCES
Black



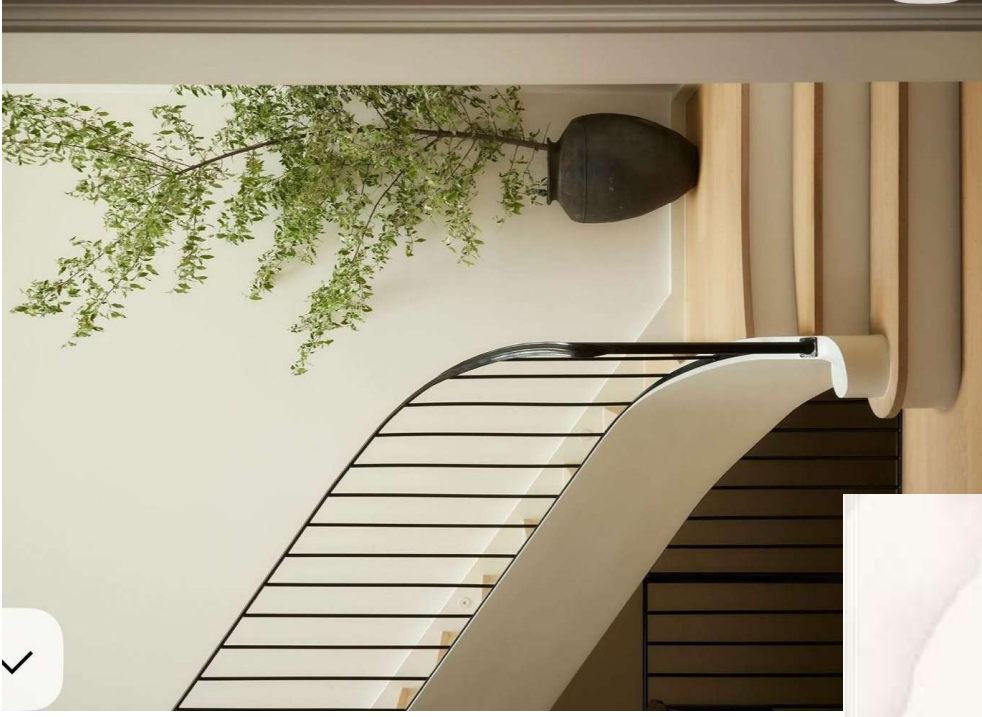
ARCHED CASED OPENING TO GREAT ROOM
Board & batten detail simplified



PLAID BOARD & BATTEN
Below stair skirt & full foyer walls



CHANDELIER
Black



STAIR DESIGN

RISERS : *Painted trim color*

TREADS : *White oak*

STRINGER : *Smooth curved stringer to conceal steps and receive balusters*

BALUSTERS : *narrow iron with connected base and handrail*

HANDRAIL : *Curved thin flat profile Iron that waterfalls into the NEWEL POST*

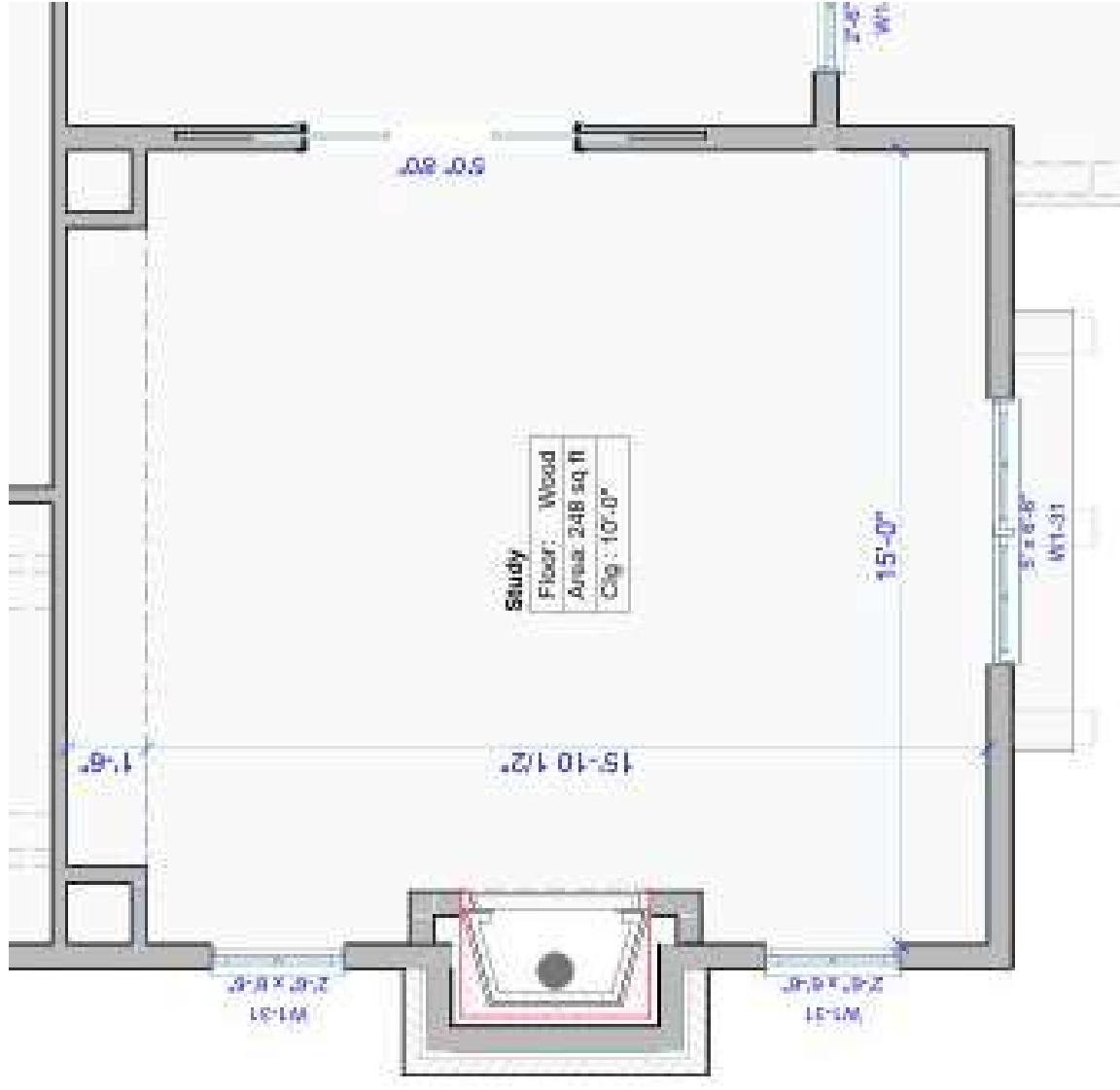
****Note rounded bottom step that extends past the others**



FLOOR TILE
*12x24" Basketweave
Calacatta & Zebirano
porcelain tile*



**FOYER PATTERN- 12x24” Basketweave install, Calacatta &
Zebrano matte porcelain**





CEILING TREATMENT
Herringbone Stained Clear Pine with trim, EXECUTE EXACTLY LIKE IMAGE



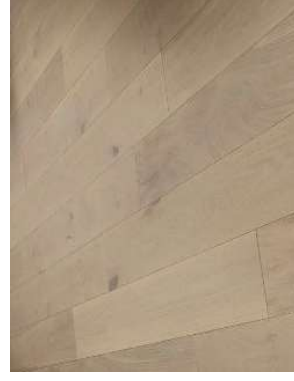
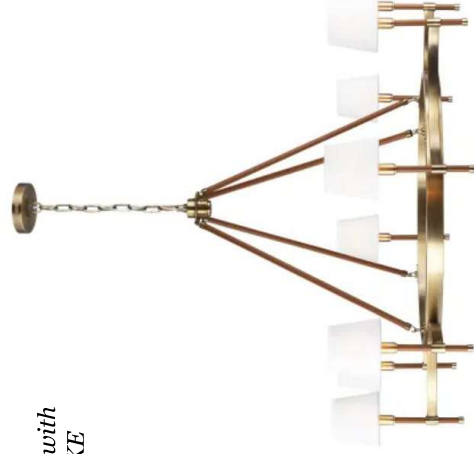
BUILT-INS
Paint grade surround with white oak inside the arches and stained shelves, sconces on stiles between arches as shown

SW 7020
Black Fox
 Interior / Exterior
 Location Number: 244-C7

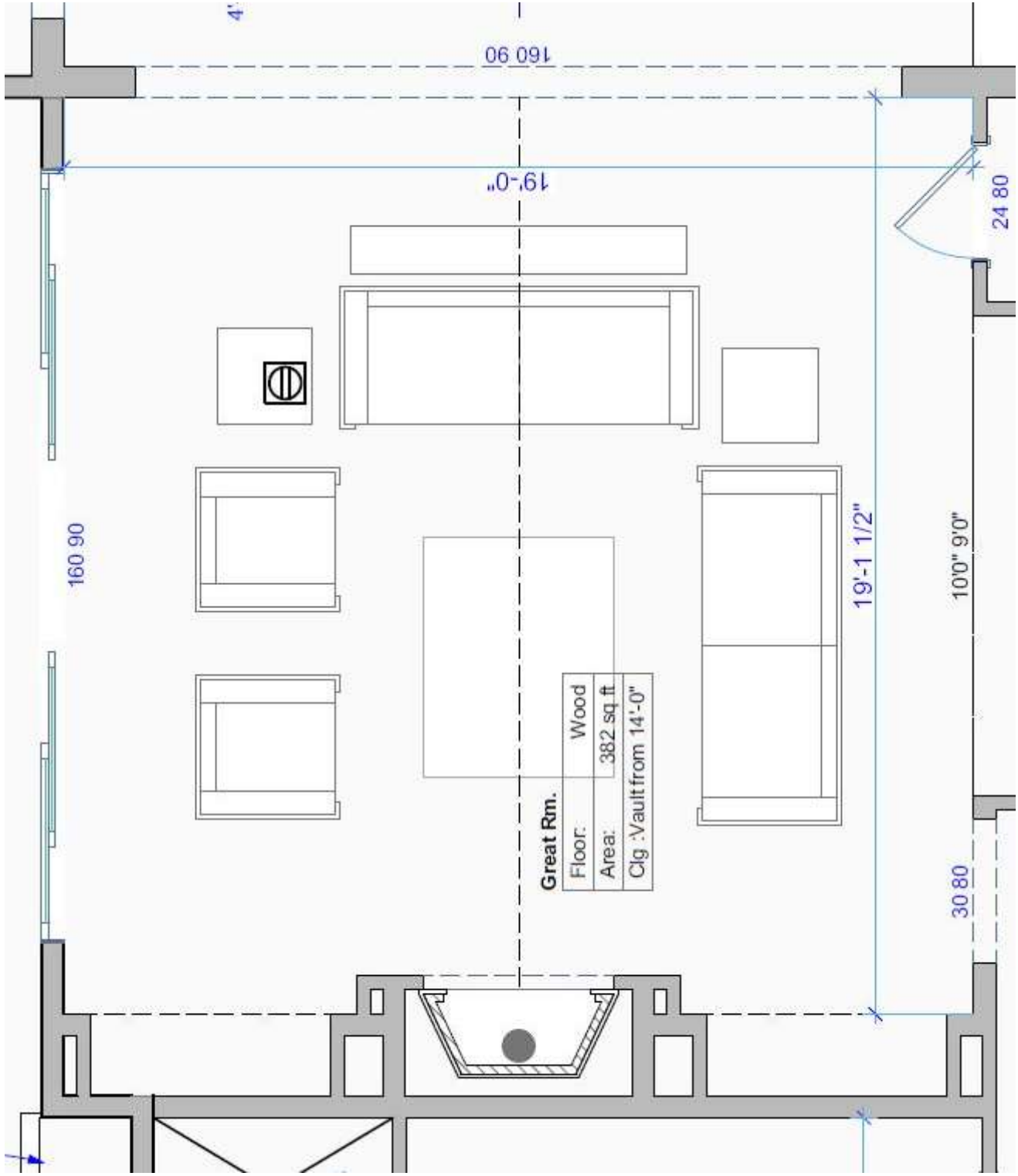
CABINET COLOR



CHANDELIER & SCONCES
Brass

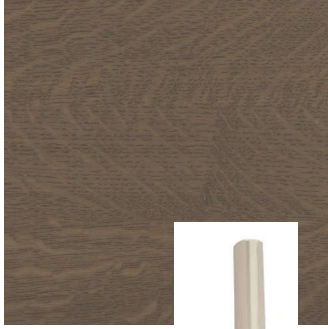


ENGINEERED WOOD FLOORS



**Not to scale, not showing window color or placement. Not for construction use--only for reference of beam style and overall color scheme*

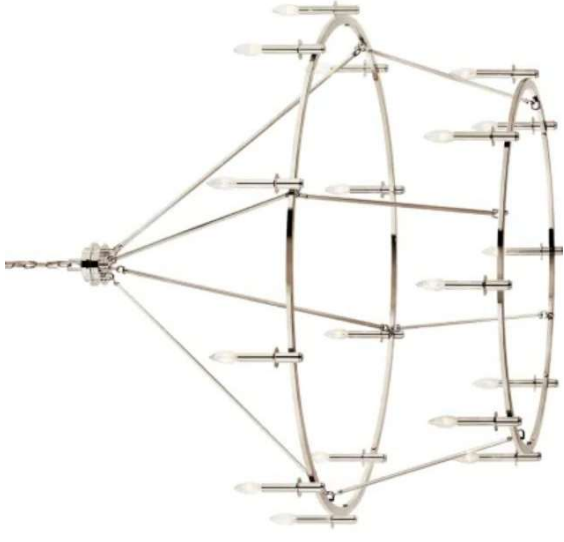




SCONCES (2)
Polished Nickel, 24"
Centered above cabinets



CEILING DETAILS
Vaulted Ceiling with
SEMIGLOSS white beams



CHANDELIER
Polished Nickel, 55" Double Tier



CABINET HARDWARE
Honey Bronze, 1" knobs



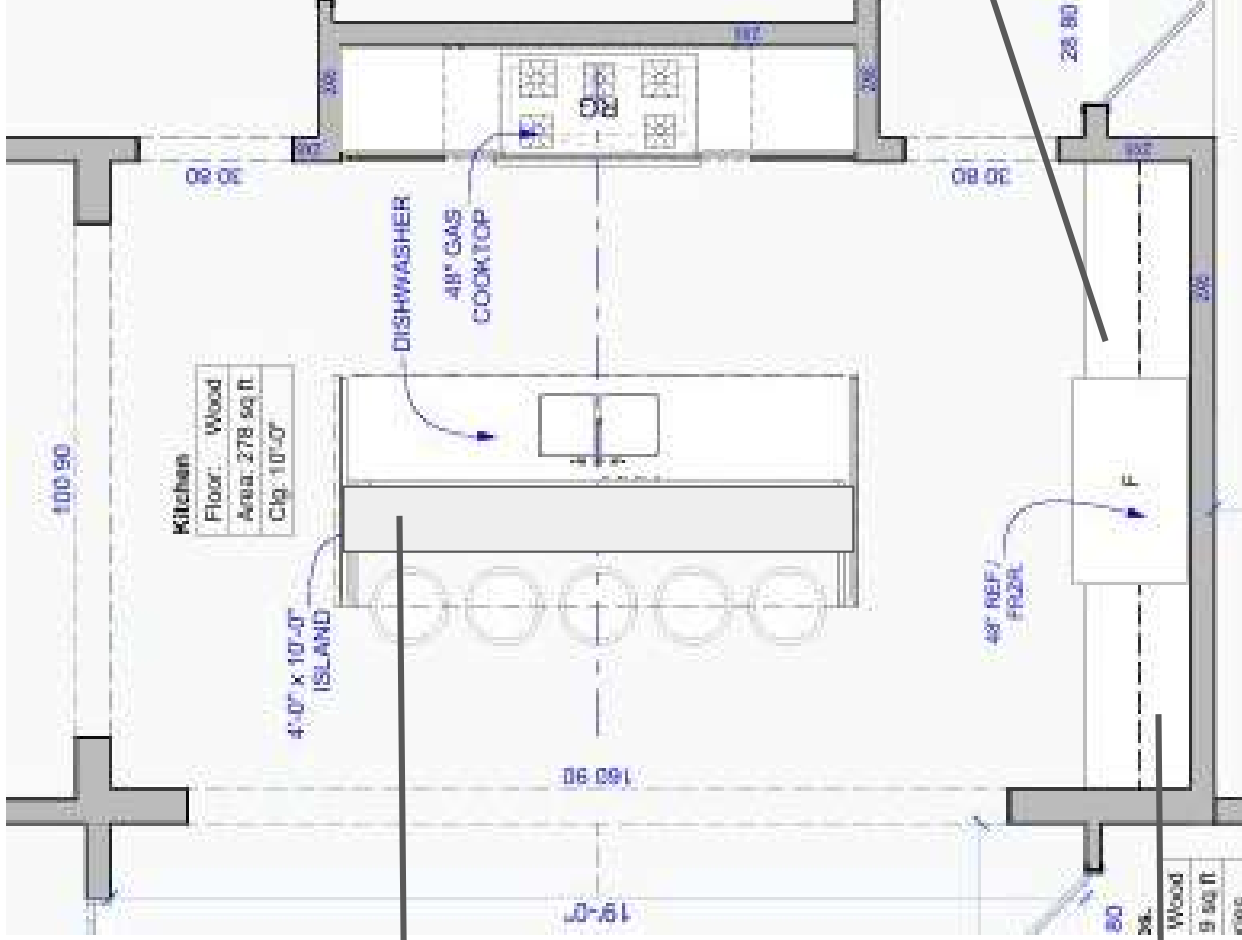




SHELVING INSIDE DOORS (only 3 shelves, so more space between each shelf)



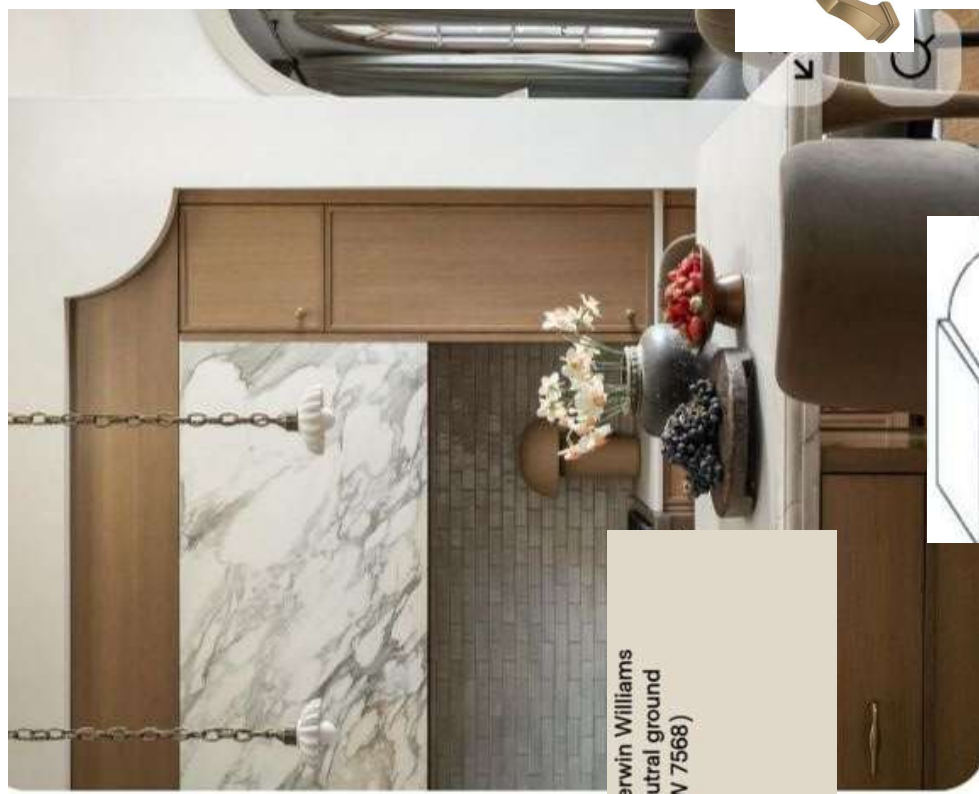
FULL CABINET, with tuck away doors (flush to refrigerator depth)



ADD CABINETS BELOW ISLAND with stained slat fronts



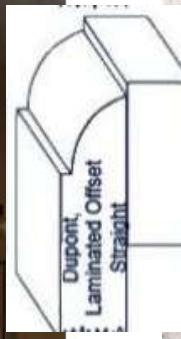
UPPER SECTION LIKE ABOVE with slat front cabinets



3 PENDANTS 12'
Stainless & Brass



CABINET HARDWARE
Champagne Bronze, 6.5" pulls,
12" appliance pulls, 1" knobs



COUNTERTOPS
2cm Carrara Bullnose,
ISLAND ONLY - Laminated edge like above, for
a total of 4cm height

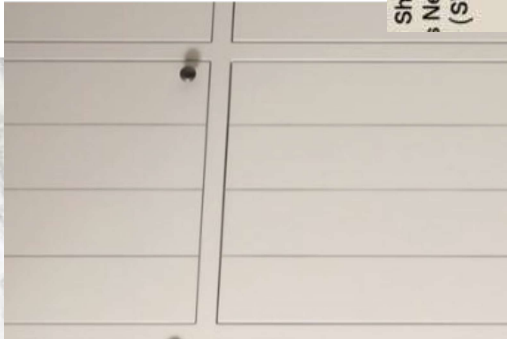
Sherwin Williams
Neutral ground
(SW 7568)



FAUCET
Champagne Bronze



2cm MARBLE SLAB
VENT HOOD



SIDE WALL CABINETS
Vertical Slat Front,
Paint Grade



RANGE BACKSPLASH
White Zellige Tile

ISLAND & RANGE
WALL CABINETS
White oak, slab
cabinets, stain tbd



ISLAND DETAILS ON FOLLOWING PAGE



32" STAINLESS STEEL SINK
Undermount



FAUCET
Champagne Bronze

DISPOSAL BUTTON
8" to right of faucet



WHITE OAK
Island legs and apron like image

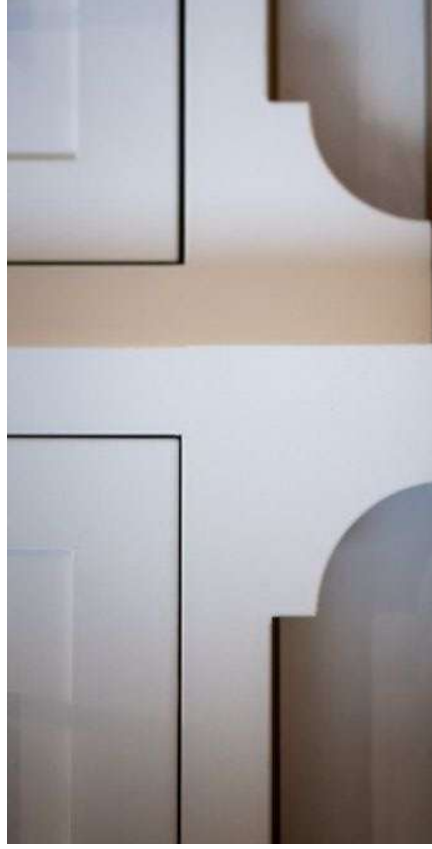


MITERED APRON FRONT
At sink (continue edge detail across front like image)

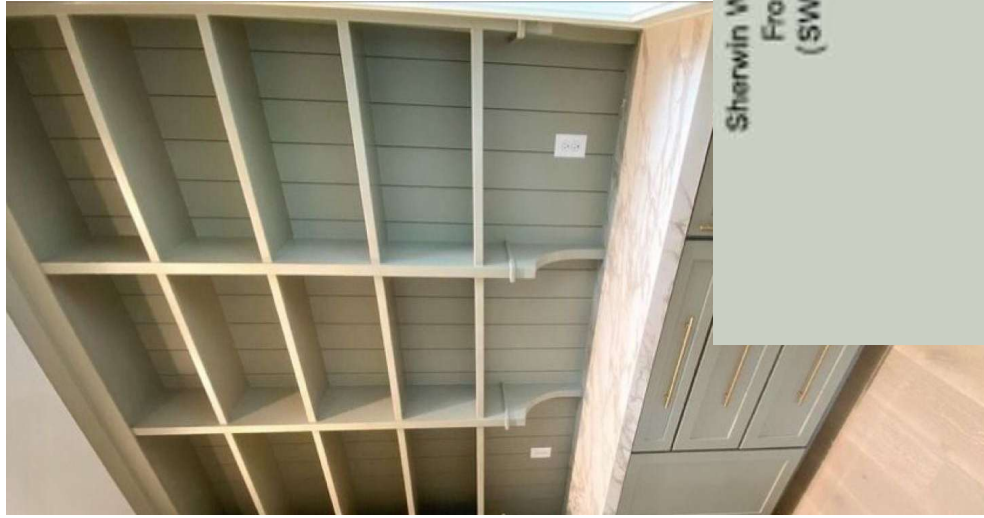


COUNTERTOPS
2cm Carrara Venato, Honed, 3" MITERED EDGE with bullnose accents

PANELED WHITE OAK
Under the bar and on the cabinet side panels



SIDE WALL CABINETS
*Vertical Slat Front, with arched feet detail.
Paint Grade*



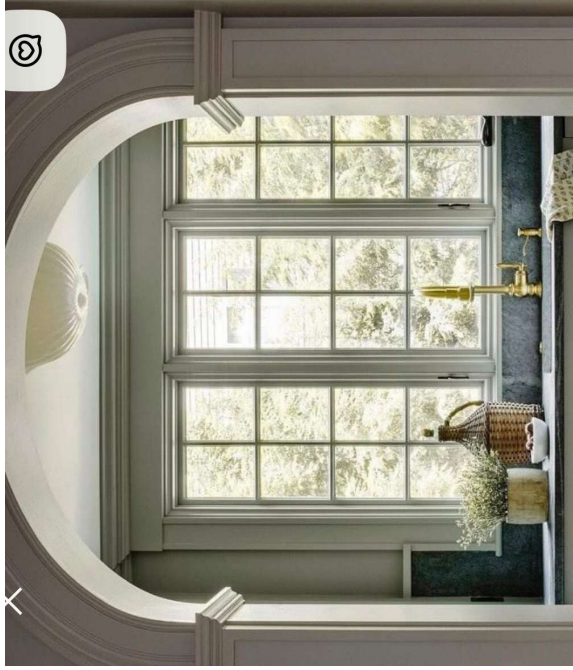
Sherwin Williams
Frostwork
(SW 0059)



PORCELAIN MARBLE FLOORS,
Checker install



2 SCONCES
Centered over the triple window



CASED WINDOW STYLE



UNDERMOUNT SINK
33" White

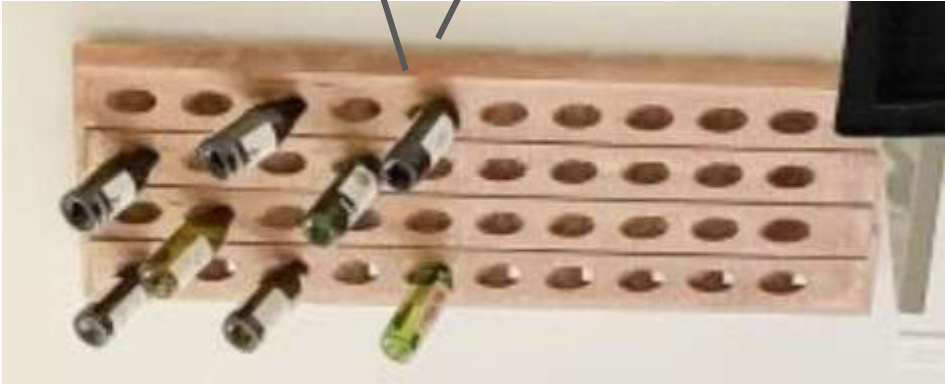
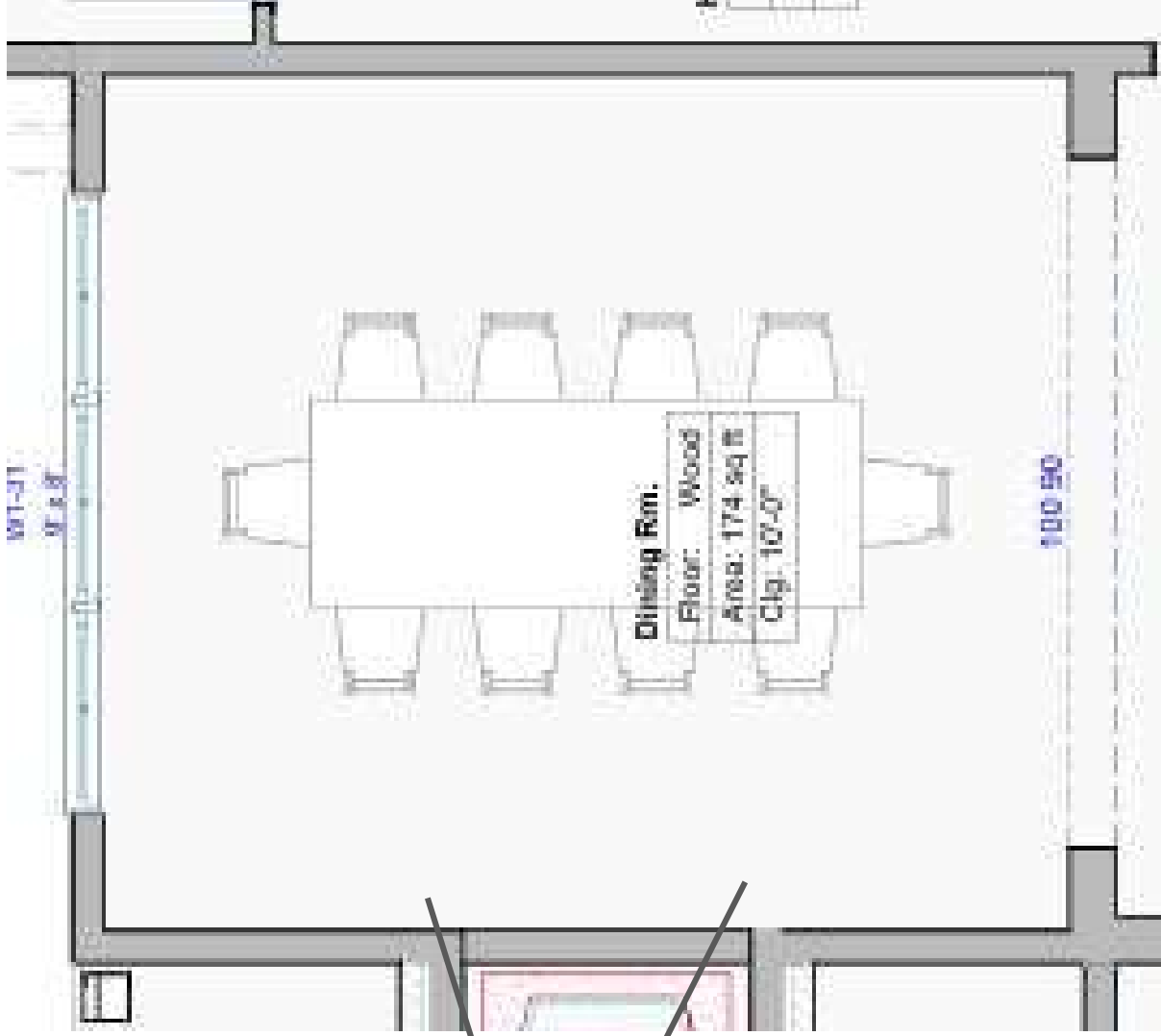


FAUCET
Champagne Bronze



4" COUNTERTOP BACKSPLASH *with vertical slat wall above*

Explore

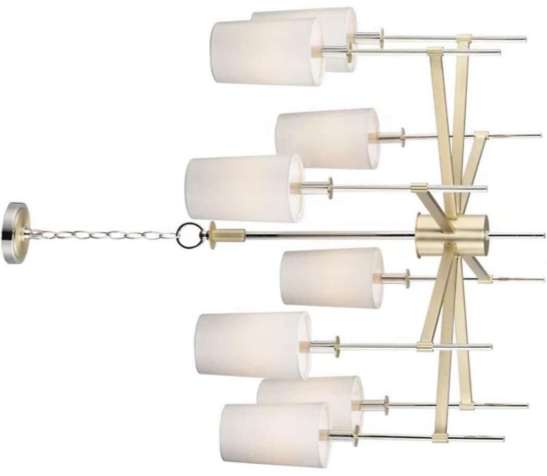


WALL MOUNTED WINE RACKS (2)



CEILING TREATMENT DETAILS

- Shallow coffered treatment with picture molding
- 12" color band at ceiling
- Cove molding at ceiling
- Picture rail at base of color band
- Paint color - *Balanced Beige*



CHANDELIER
36" Satin Brass and Polished Nickel

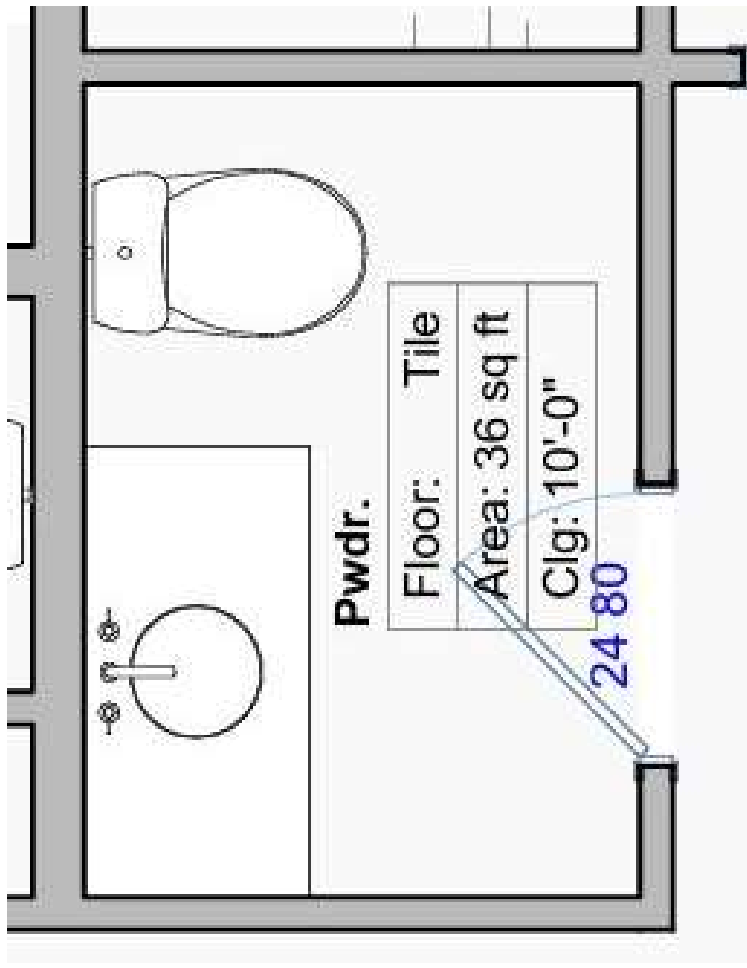


**CEILING /
COLOR BAND**



WALL COLOR







COUNTERTOP Honed Carrara, 4cm Double Bullnose laminated edge, 8" Backsplash with rounded corners



MIRROR
20x36"
Brass
2 SCONCES



LIMEWASH
Color drench walls & ceiling



RED OAK CABINET
With rounded corners, fluted drawers and ball feet



FLOORS
Patterned Marble Mosaic



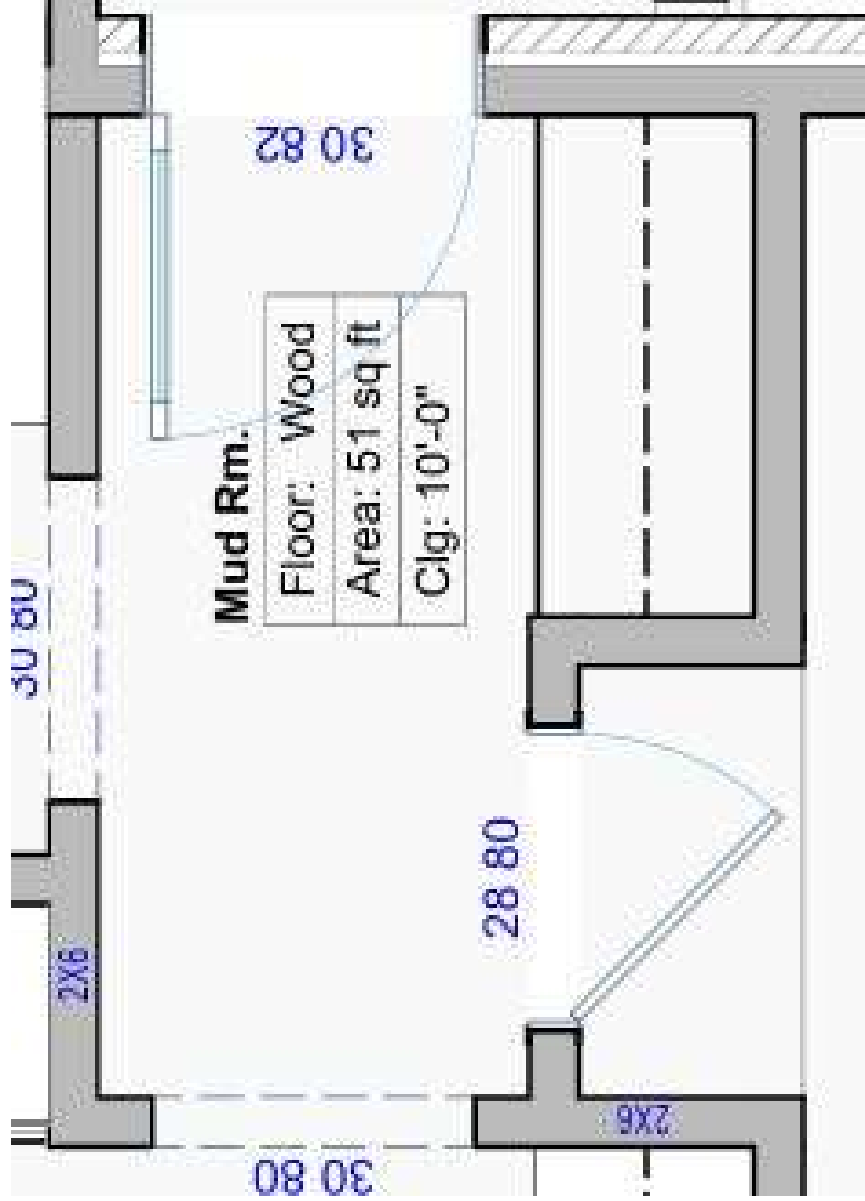
WALL MOUNT FAUCET
Vibrant Modern Brushed Brass



CABINET HARDWARE
Golden Bronze



STAIN Minwax Early American





4 HOOKS
Polished Nickel

RED OAK BENCHTOP &
SHELF
*Stain to match Kitchen
cabinets*



4" VERTICAL TONGUE &
GROOVE Red Oak

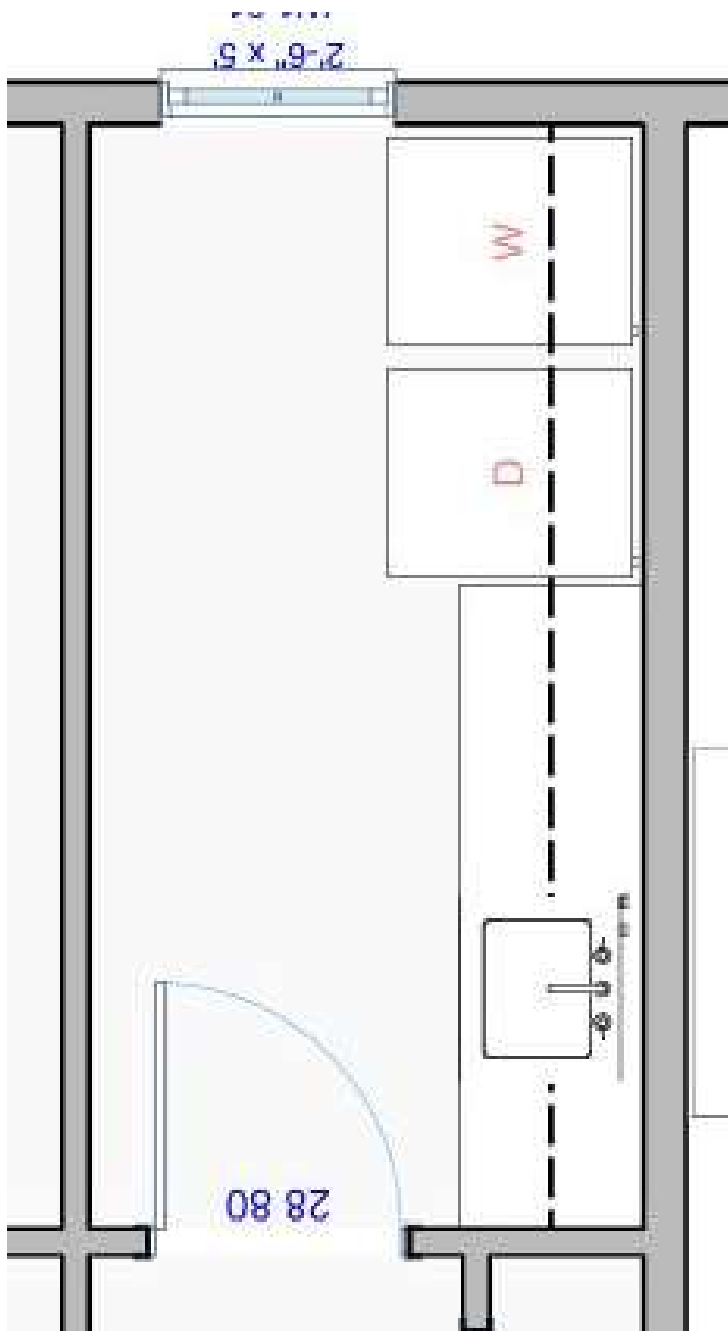


Unlacquered Brass Knob
(1 per drawer)

Slim Shaker Drawers

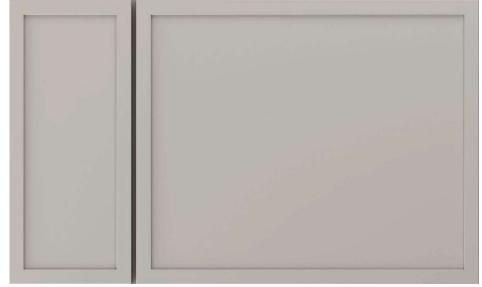


Sherwin Williams
Neutral ground
(SW 7568)





BACKSPLASH
Carrara scalloped tile,



CABINET HARDWARE
Polished Nickel, 3" cup pull & knob

CABINETS
Slim shaker doors & drawers

Gray lower, s white uppers



SEMIFLUSH LIGHT
Polished Nickel



UNDERMOUNT SINK
33" White



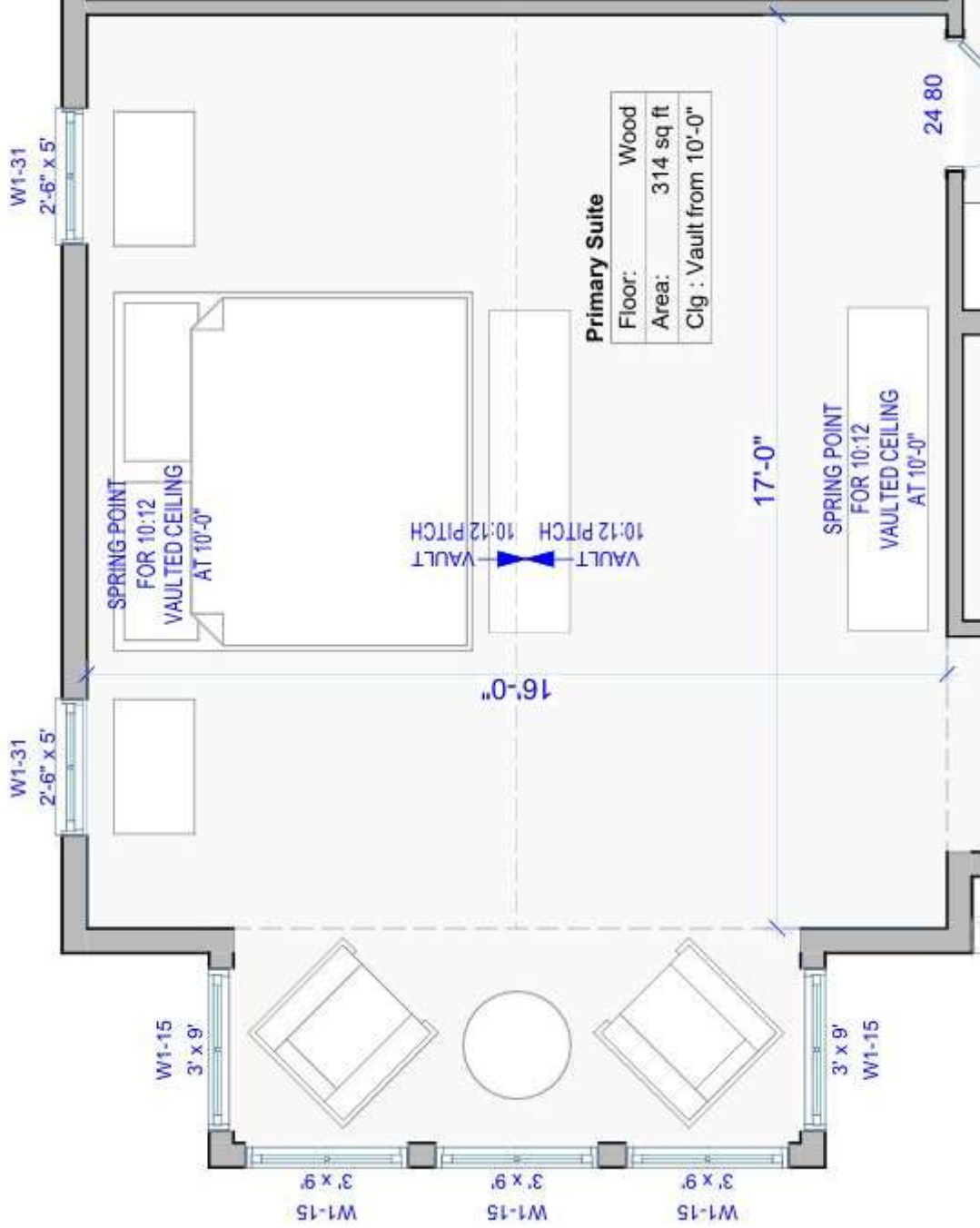
FAUCET
Champagne Bronze



COUNTERTOPS
3cm Della Terra Portofino



FLOOR TILE
White Brick tile, herringbone install

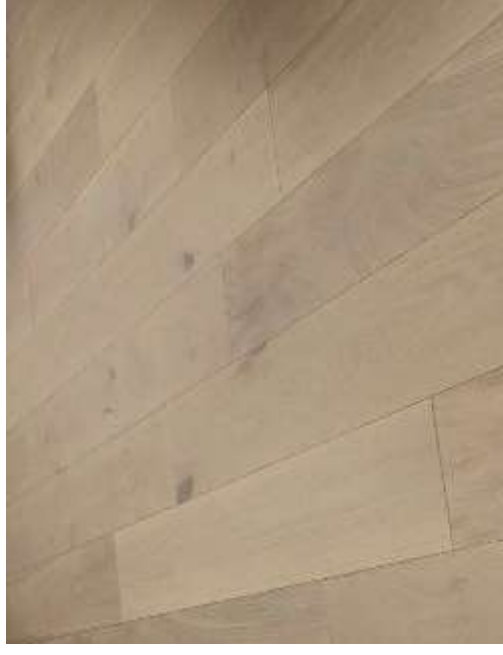




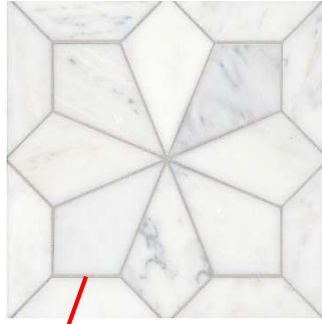
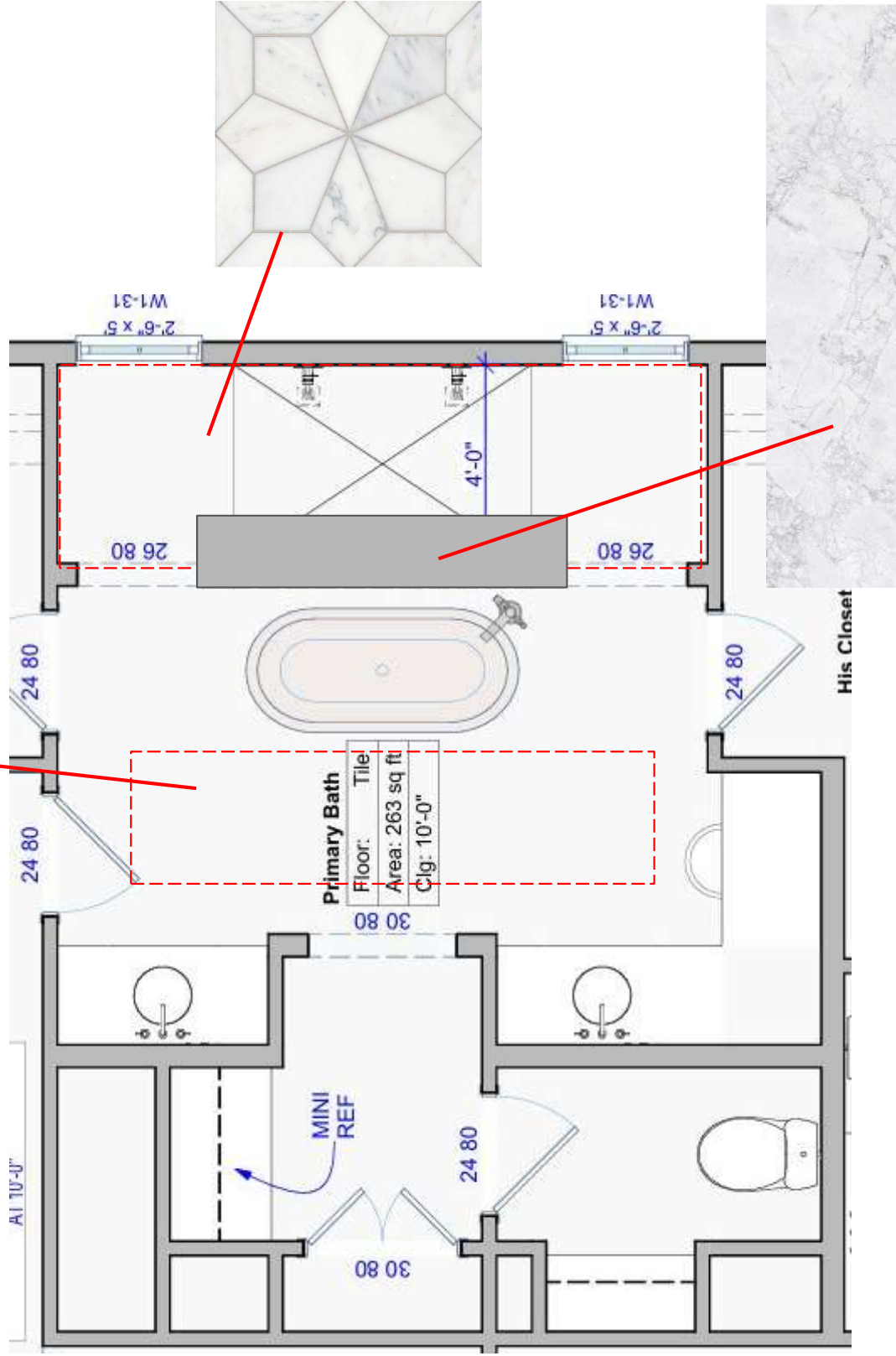
VAULTED CEILING with clear pine beam



60" CEILING FAN, White



ENGINEERED HARDWOOD FLOORS





SHOWER WALL TILE
Narrow herringbone tile in white

**NICHE PLACEMENT TBD,
 Marble BACK AND SHELVES**

PORCELAIN SLAB BENCH
Waterfall on all five sides. Mitered edges (tub, inside shower, bench top & end caps)



SHOWER FLOOR & RUG INSET
 (located between tub and vanity)
Marble Mosaic



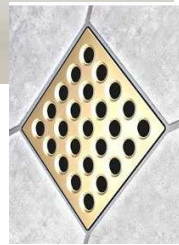
MAIN BATHROOM FLOOR
12x24 Marble Tile - Porcelain TBD



SHOWER INSPIRATION

**SHOWER PLUMBING &
 HARDWARE**
Brushed Gold

DRAIN
Satin Gold



2CM MARBLE TBD
At bench and shower niche



CHANDELIER
Silver



TUB FILLER
Brushed Gold



**RUG INSET (located
between tub and vanity)**
Marble Mosaic



FLOOR TILE
12x24 Honed Marble



MIRROR
30x48"
Polished nickel

SCONCES
Brass / acrylic

NOTE - I'm not sure the sconces will match the faucet. Also now the only polished nickel or silver is the hardware and chandelier--I suggest switching sconces to pol. nickel



HARDWARE
Heritage Polished Nickel

NOTE - THE MIRROR THRU FERGUSON IS TOO SMALL



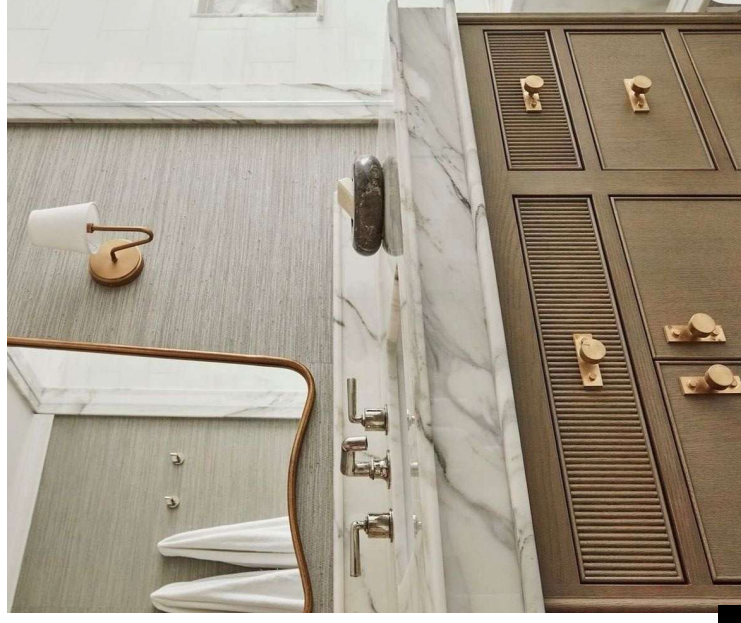
FAUCETS
Brushed Gold

2CM HONED ARABESCATO COUNTERTOPS, 4" Mitered
Edge like image to the right

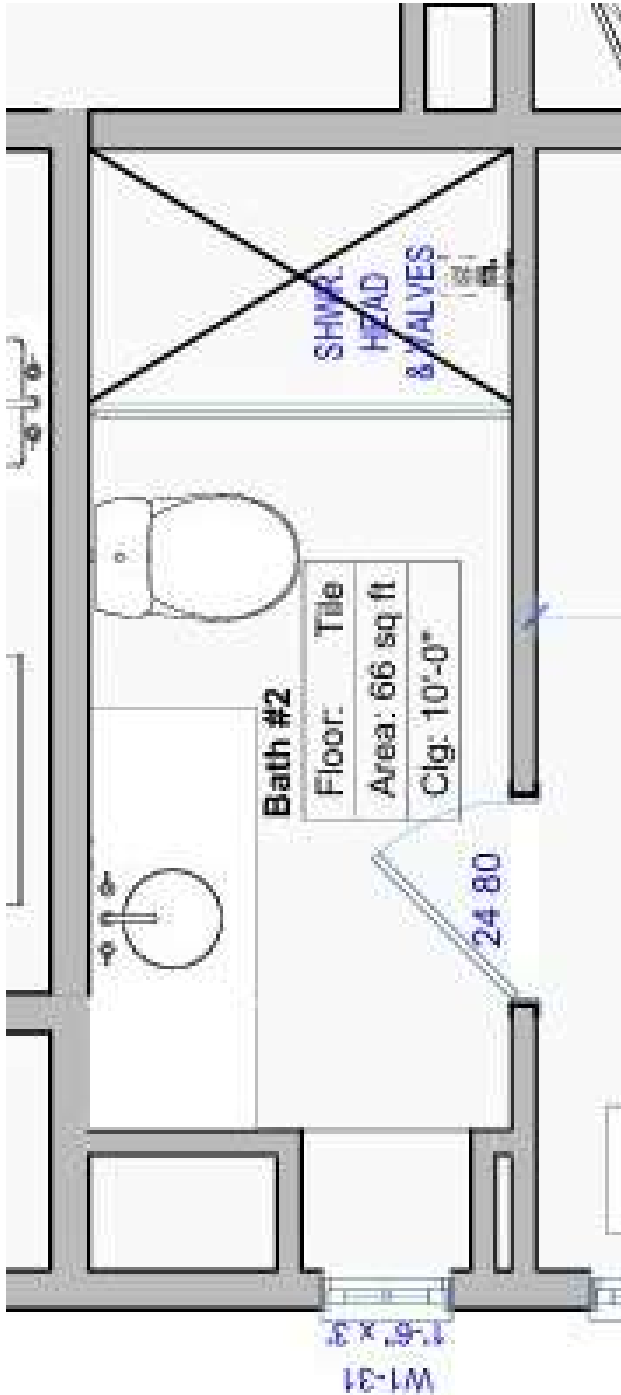
ARABESCATO 3CM 12815 #2 KLZ 359

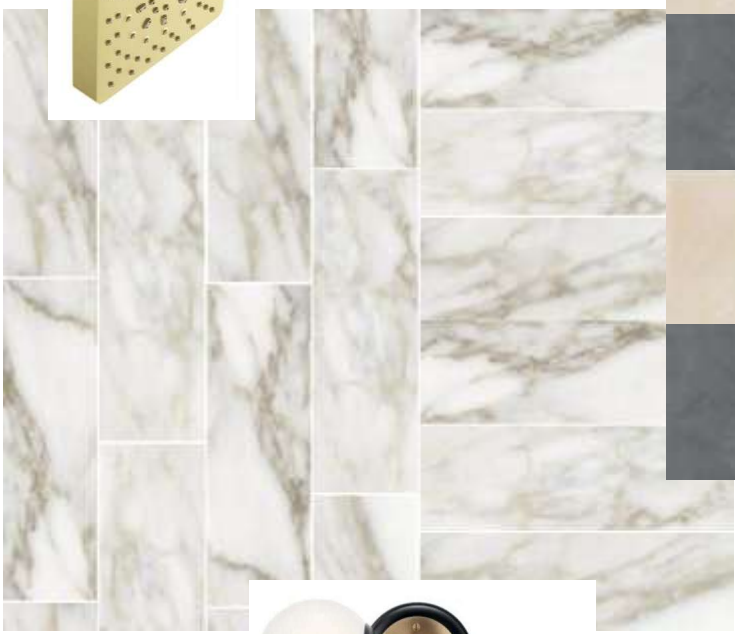


WALLPAPER BEHIND MIRRORS
Light Gray faux grasscloth



WHITE OAK VANITY *Reeded top drawers, all drawers with beaded trim*





BRASS MIRROR
 24x36" **WILL NOT MATCH**
THE SIZE IN THE DRAWINGS
BRASS & BLACK SCONCES
 sconce may not match plumbing



PLUMBING
Brushed Gold

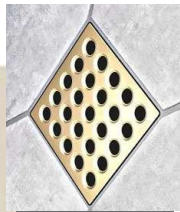


3CM TAJ MAHAL
Eased Edge with apron front sink accent

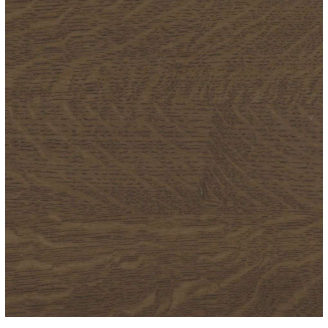
SHOWER WALLS
4"x12" marble porcelain, single soldier row with brick lay above



SHOWER FLOOR & ROOM FLOOR
6x6" Checkered tile



DRAIN
Satin Gold

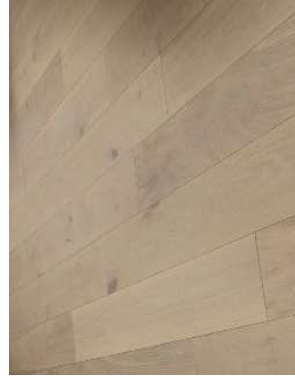


VANITY STYLE
White oak with beaded drawer trim & reeded top drawers

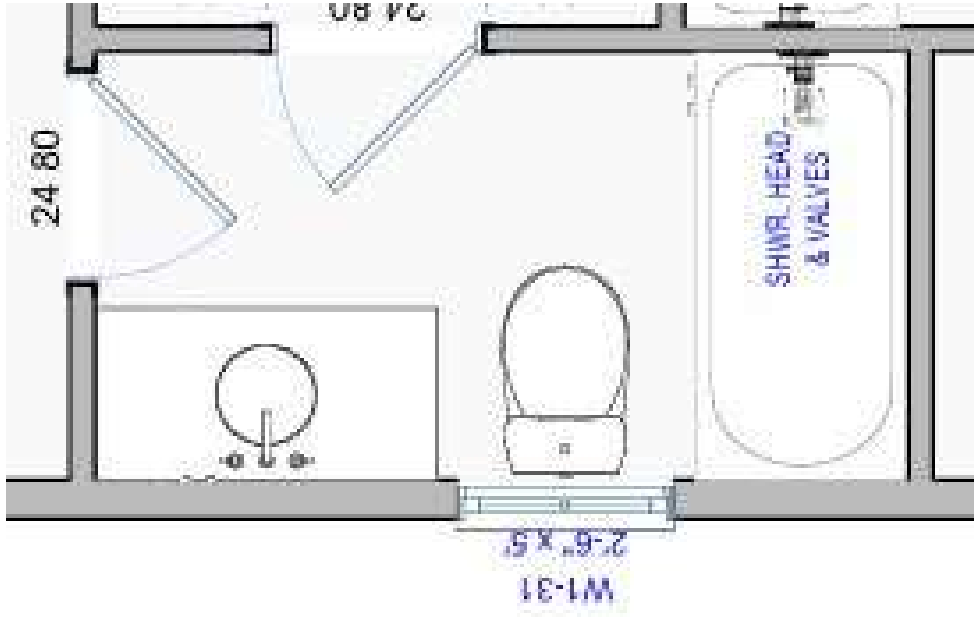




CEILING FAN
White 52"



ENGINEERED WOOD FLOORS



PAINT	
CEILING	Typical
WALLS	Typical
TRIM	Typical
CABINET	SW Taupe of the Morning

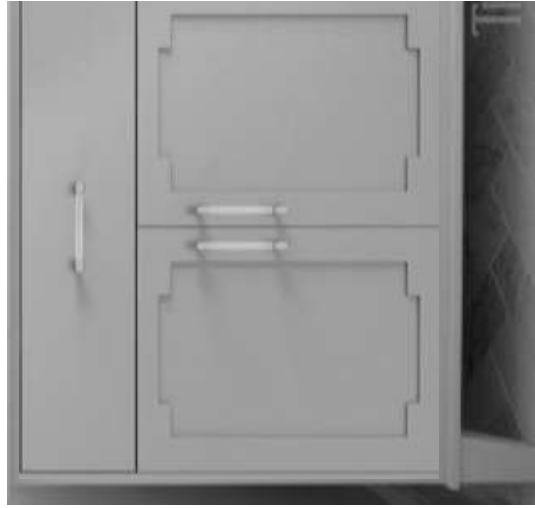


23x34"
MIRROR
Gold

2 SCONCES
Chrome / Brass



CABINET
HARDWARE
Honey Bronze



SHOWER HEAD
Polished Nickel



BATH ACCESSORIES
Polished Nickel

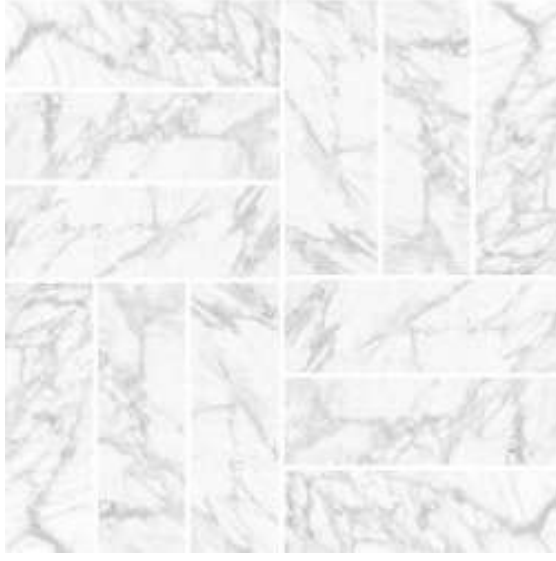


FAUCET
Polished Nickel



UNDERMOUNT SINK
W/ CURVED BOTTOM

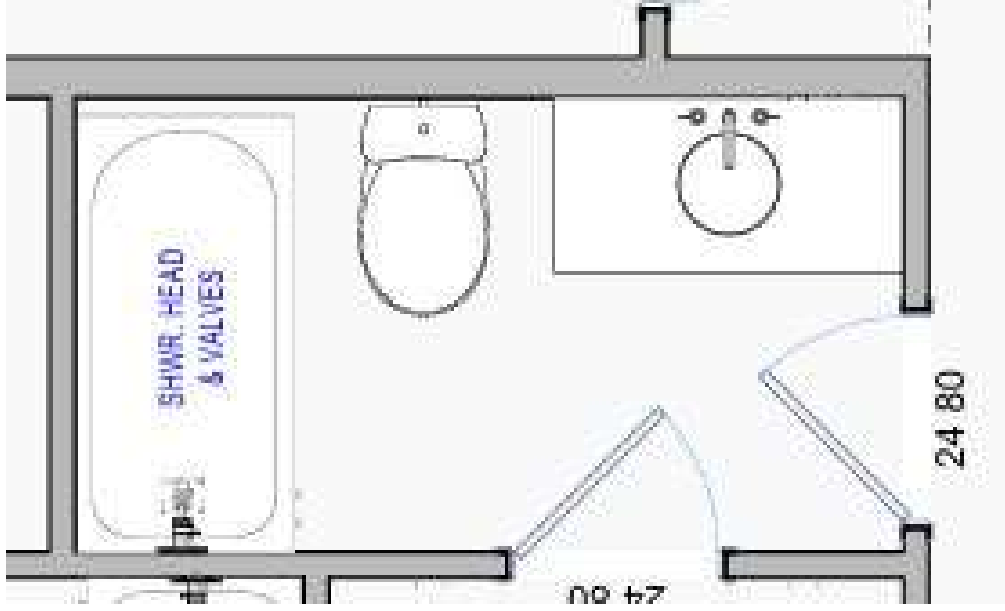
COUNTERTOPS
3cm Honed Carrara,
Ogee edge



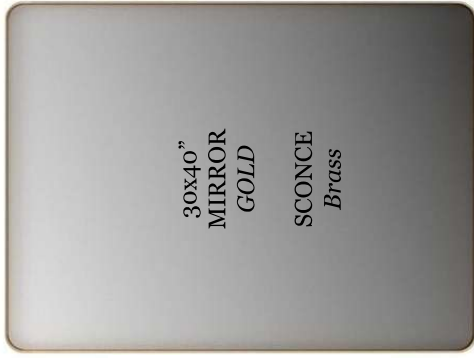
SHOWER / TUB WALLS
4x12" Marble Porcelain tile,
basketweave



BATHROOM FLOOR
White Penny Tile



PAINT	
CEILING	Typical
WALLS	Typical
TRIM	Typical
CABINET	SW Bracing Blue



30x40"
MIRROR
GOLD
SCONCE
Brass



CABINET
HARDWARE
Honey Bronze



SHOWER HEAD
Champagne Bronze

Final selections show a
need tub faucet / shower



FAUCET
Champagne Bronze



CABINET STYLE
Painted Slim shaker drawers with top
drawer reeded, accented feet, all double
knobs



SHOWER / TUB WALLS
White picket



BATHROOM FLOOR / SINK BACKSPASH
4x4 Cotto, install in straight lay pattern



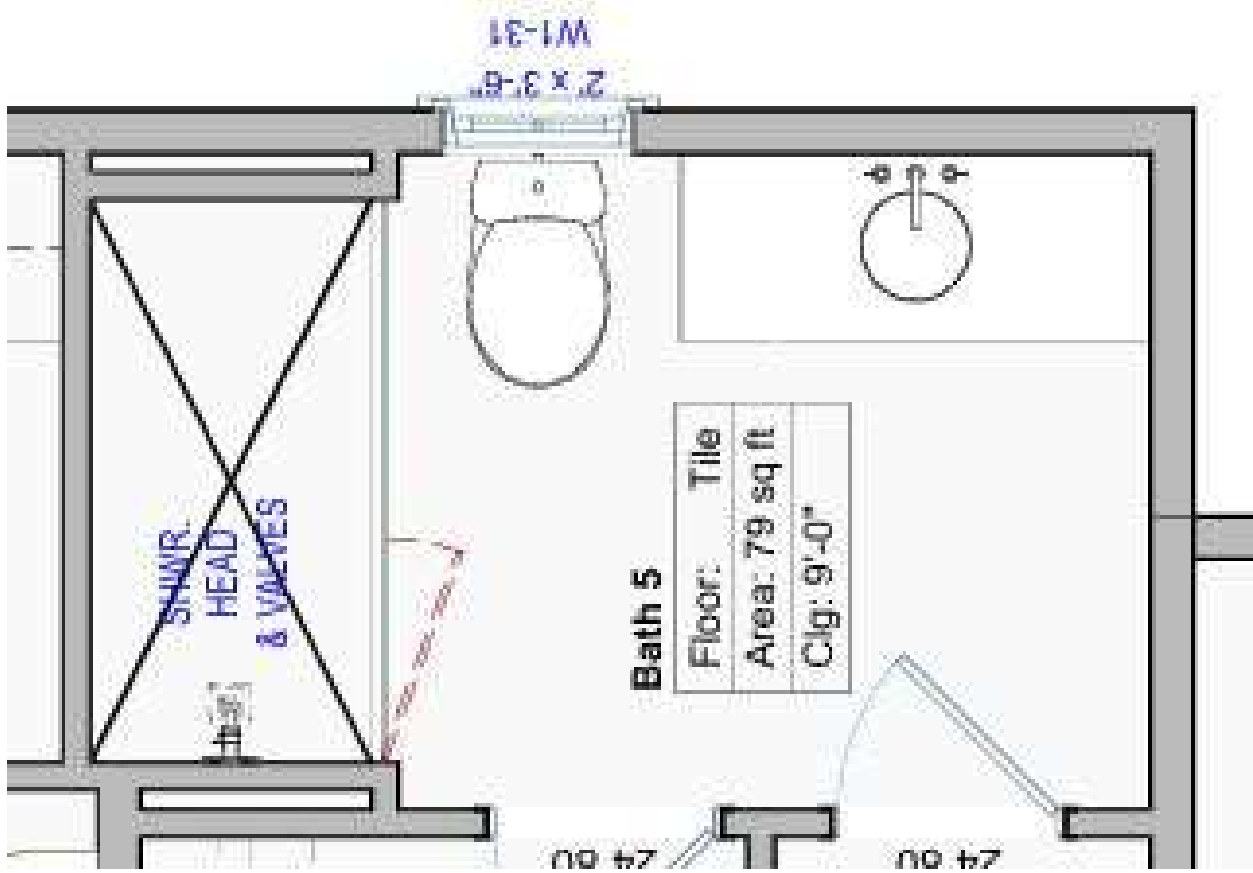
BATH ACCESSORIES
Champagne Bronze



UNDERMOUNT SINK
W/ CURVED BOTTOM

COUNTERTOPS
3cm White Quartz, Eased edge

Sherwin Williams
Bracing Blue
SW 6242



PAINT	
CEILING	Typical
WALLS	Typical
TRIM	Typical
CABINET	SW Sleepy Blue



HARDWARE
Polished Nickel

Sherwin Williams
Sleepy blue
(SW 6225)



CABINET STYLE
Painted, Recessed cabinet with beaded trim, accent feet



SHOWER HEAD
Polished Nickel

**SHOWER CLIPS
& DOOR
HANDLE -**
Polished Nickel



FAUCET
Polished Nickel



COUNTERTOPS
3cm White Quartz, Eased edge



SHOWER WALLS
Scallop shaped tile
TOP 6' Blue
BOTTOM 4' WHITE
(transition with the rounded
tile edge not cut edge)



BATHROOM FLOOR
White Penny Tile

BATHROOM FLOOR
2.5" x 10" White tile
Double herringbone

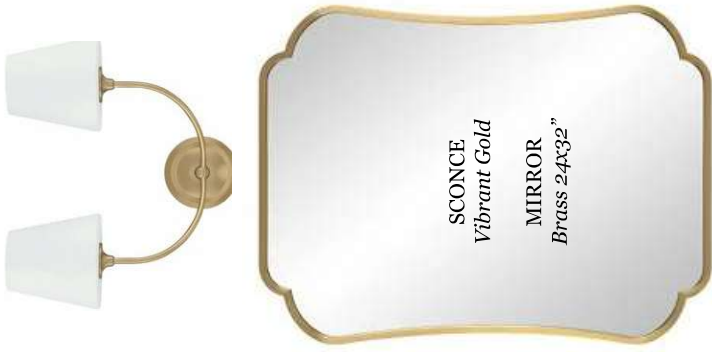


NOTE - This is an alternate tile combo option that is more cost effective.





PAINT	
CEILING	Typical
WALLS	SW Taupe of the Morning
TRIM	Typical
CABINET	SW Black Fox



CABINET HARDWARE
Warm Brass



CABINET
Reeded doors with rounded corners



**BEADBOARD
WAINSCOTTING**



BATH ACCESSORIES
Champagne Bronze

highlighted selections won't match plumbing



COUNTERTOP
3cm Honed Carrara, Double Bullnose Edge, 10" Scalloped backsplash



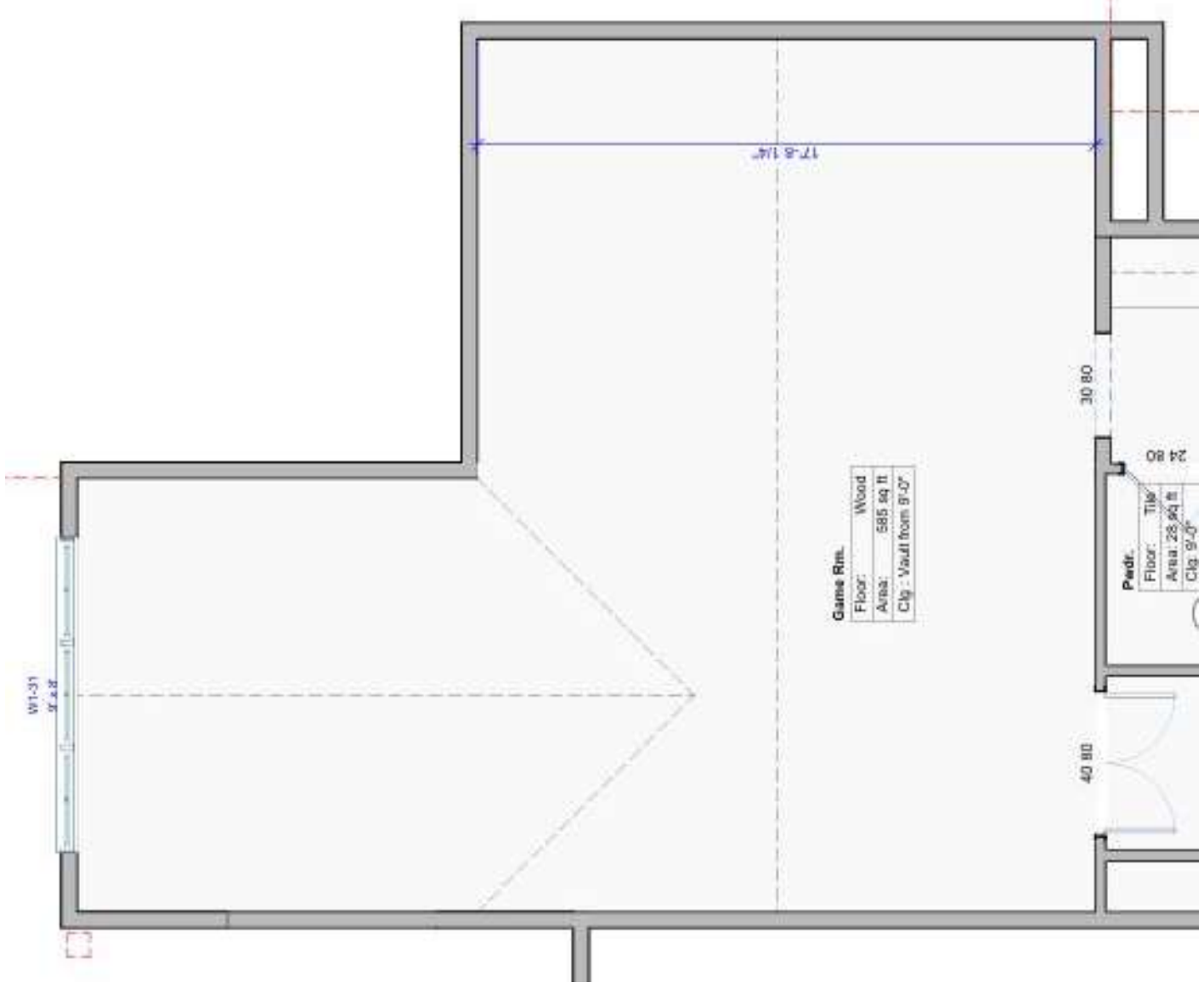
FAUCET
Brushed Gold



COUNTERTOP
4cm Carrara, double bullnose edge



FLOOR TILE
Marble mosaic



PAINT	
CEILING	<i>Typical</i>
WALLS	<i>Typical</i>
TRIM	<i>Typical</i>
CABINET	<i>SW Taupe of the Morning</i>



CEILING FAN
60" White / Brass



CABINET HARDWARE
Honey Bronze



LOWER CABINETS ONLY
*Painted Slim shaker cabinet front,
Under counter glass front
refrigerator*



COUNTERTOP
*3cm Honed Carrara,
Bullnose Edge,
10" Scalloped backsplash*